

# DISH STUDIOS LA

DIEGO UCHITEL

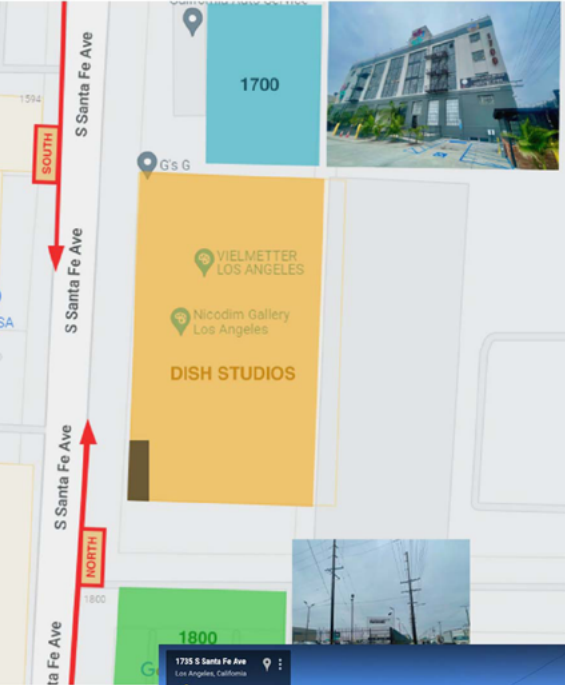
## PARKING & LOADING INFORMATION

**AVAILABLE PARKING**

- 2 HOURS OR LESS
- DISH STUDIOS
- UNLIMITED PARKING
- FREIGHT GATE  
\*Please enter through freight gate to use the freight elevator.

**NOTE:** Please park at the 1700 building if you are here for 2 hours or less. If you are here for more than 2 hours please park in the 1800 parking structure along side the building.

**HELP:** There is a parking attendant available at the 1700 building entrance.



The map shows the intersection of S Santa Fe Ave and S Santa Fe Ave. The 1700 building is highlighted in light blue, and the 1800 parking structure is highlighted in green. A yellow area indicates the Dish Studios building. A red arrow points south on S Santa Fe Ave, and a red arrow points north on S Santa Fe Ave. A red box labeled 'SOUTH' is on the southbound arrow, and a red box labeled 'NORTH' is on the northbound arrow. A red box labeled 'SANTA FE AVE' is on the left side of the map. A red box labeled '1700' is on the right side of the map. A red box labeled '1800' is on the right side of the map. A red box labeled 'DISH STUDIOS' is on the right side of the map. A red box labeled 'FREIGHT GATE' is on the right side of the map. A red box labeled 'NOTE' is on the left side of the map. A red box labeled 'HELP' is on the left side of the map. A red box labeled 'ELEVATOR ENTRANCE' is on the left side of the map. A red box labeled 'BUILDING ACCESS ON THIS SIDE' is on the right side of the map. A red box labeled 'CREW PARKING LOT' is on the right side of the map. A red box labeled 'FREIGHT ELEVATOR ENTRANCE' is on the right side of the map.

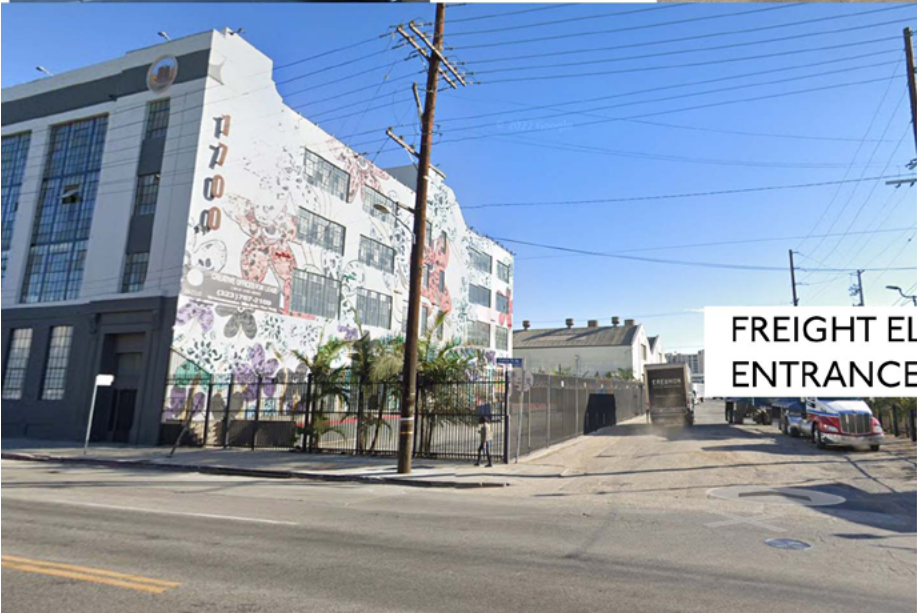


ELEVATOR ENTRANCE



BUILDING ACCESS ON THIS SIDE

CREW PARKING LOT



FREIGHT ELEVATOR ENTRANCE

NEED HELP? HAVE QUESTIONS?  
PLEASE CALL -  
**TY MULLEN**  
**+1 (805) 588-1533**